

Site: 4, US Hwy 160 & CR 442 junction, looking west

Before



After: transmission line south of Highway 160



150 ft weathering steel monopoles

San Luis Transmission Line

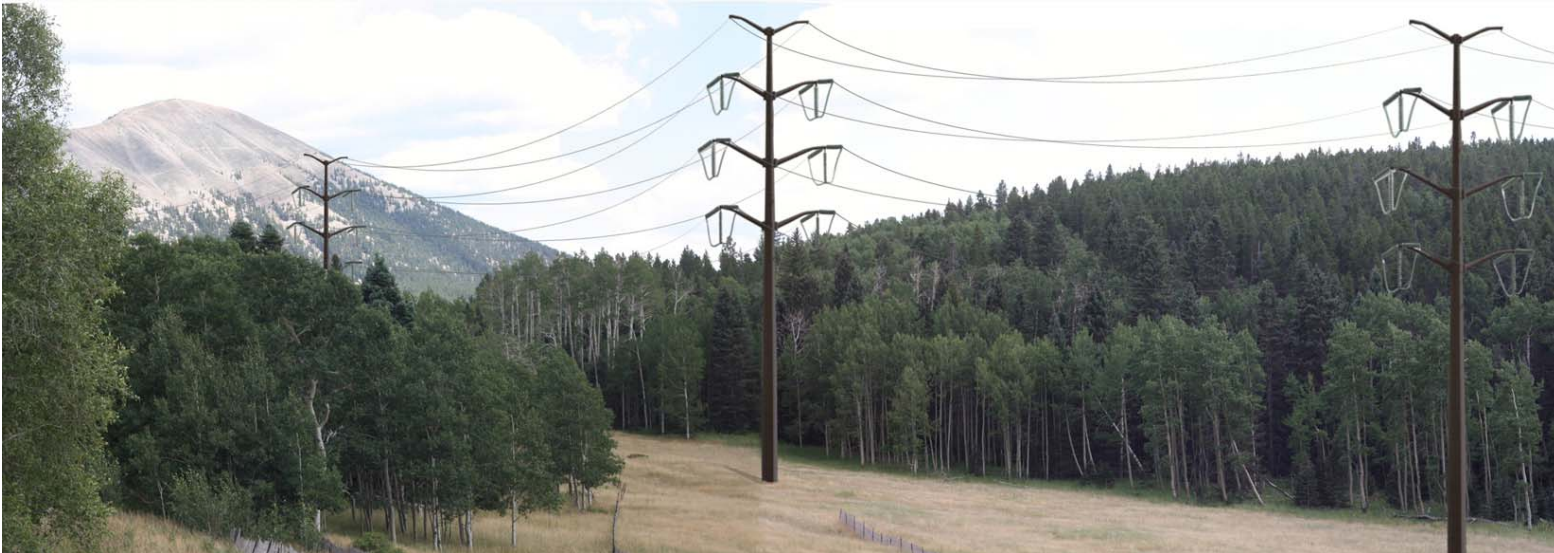
Exhibit 1
Page 2 of 6

Site: 6, US Hwy 160 west of La Veta Pass Road, looking east

Before



After: transmission line south of Highway 160



150 ft weathering steel monopoles.

San Luis Transmission Line

Site: 18, US Hwy 160 east of Fort Garland, looking south

Before



After: transmission line south of Highway 160



115 ft H Poles

San Luis Transmission Line

Exhibit 1
Page 4 of 6

Site: 21, US Hwy 160 & Hwy 150 Intersection west of Blanca, looking east

Before



After: transmission line alongside Highway 160



115 ft H Poles

Site: 27, Taos Rd 1.5 miles South of Hwy 160 and Ft. Garland, looking west

Before



After: transmission line south of Highway 160



115 ft H Poles

San Luis Transmission Line

Site: 29, Trinchera Ranch Road & Beekman, looking east

Before



After: transmission line south of Highway 160



115 ft H Poles

San Luis-Pueblo Transmission Line Scenic Assessment

San Luis Valley, Colorado

North Corridor Boundary Viewshed Analysis 150ft Transmission Line Height

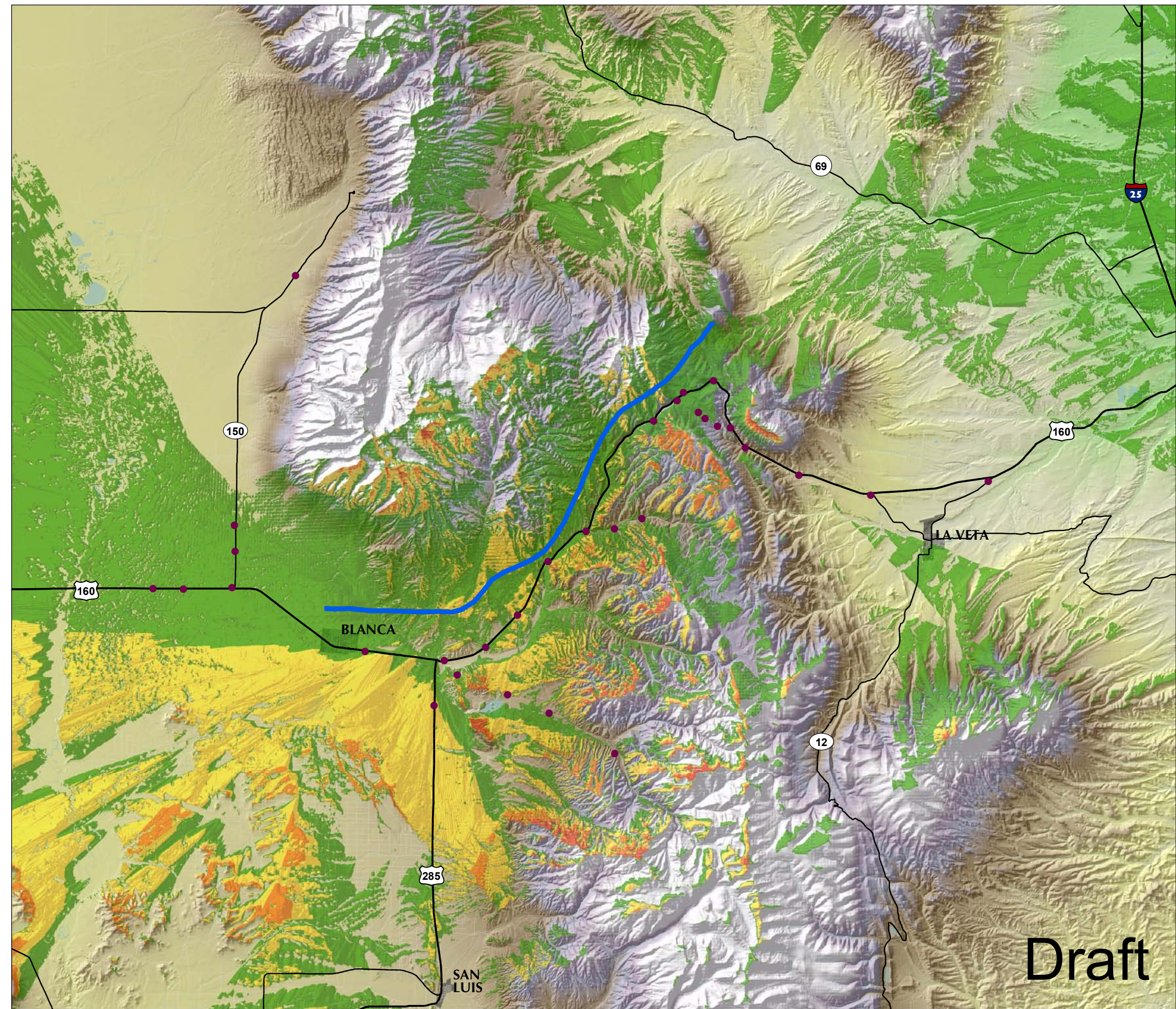
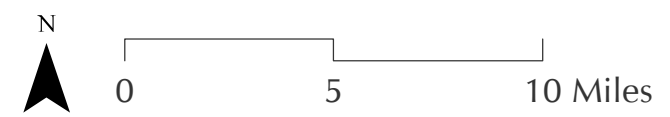
North Corridor Visible Hit Rate

- 1 - 250
- 251 - 500
- 501 - 750
- 751 - 1,132

- Site Tour Stop
- North Corridor Boundary Line
- City
- Major Roads
- Minor Roads
- River/Stream
- Waterbody

**Approximate Total Viewable Area
582,457 Acres**

Note: viewable area measured within map extent

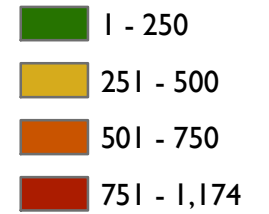


San Luis-Pueblo Transmission Line Scenic Assessment

San Luis Valley, Colorado

US Hwy 160 Viewshed Analysis 150ft Transmission Line Height

US Hwy 160 Visible Hit Rate



● Site Tour Stop

— US Hwy 160

■ City

— Major Roads

— Minor Roads

— River/Stream

■ Waterbody

**Approximate Total Viewable Area
319,518 Acres**

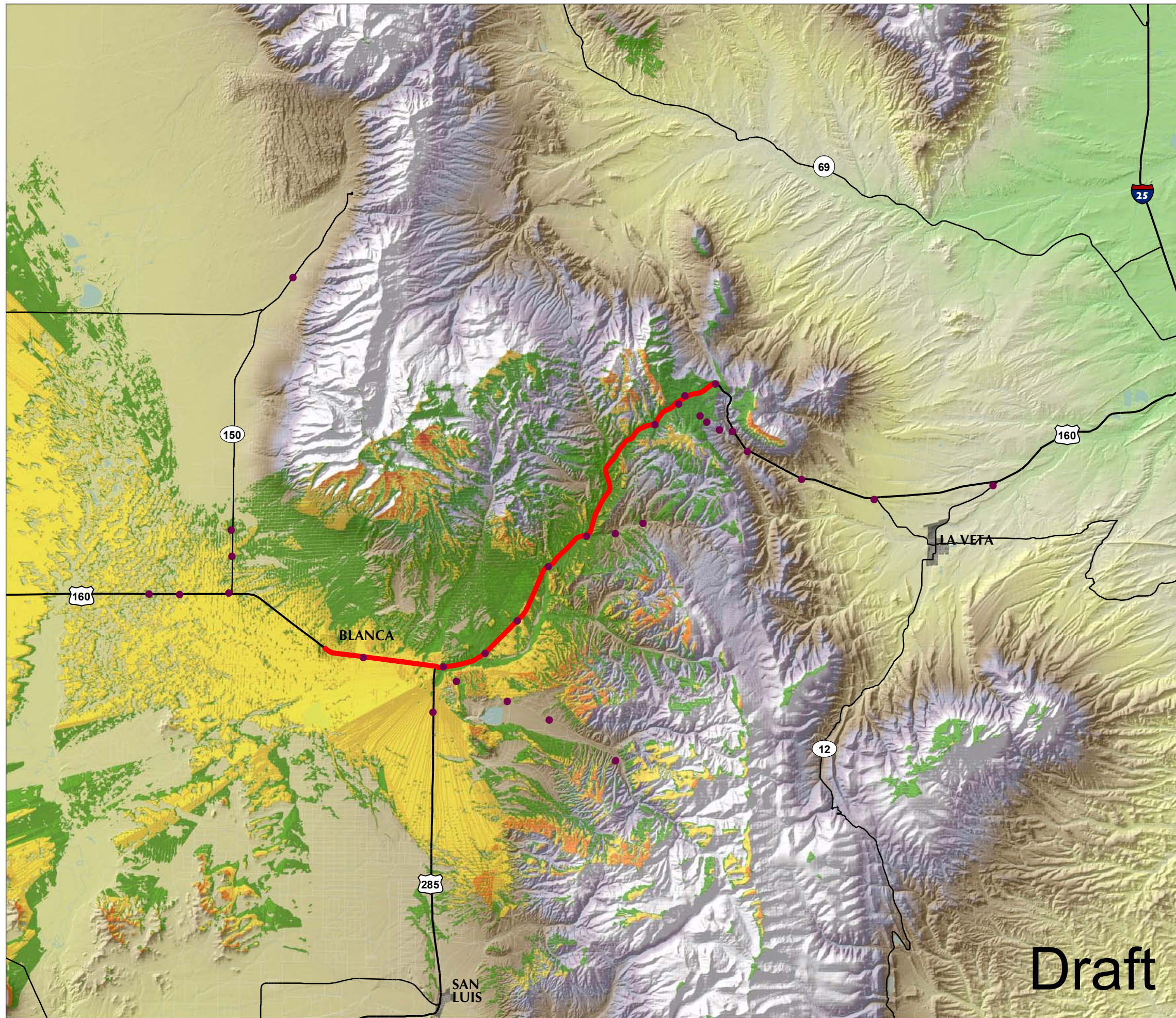
Note: viewable area measured within map extent



0 5 10 Miles



September 2009 | Data Source: USGS, ESRI,
Department of Transportation and Preliminary
Alternative Corridors Map



San Luis-Pueblo Transmission Line Scenic Assessment

San Luis Valley, Colorado

South Corridor Boundary Viewshed Analysis 150ft Transmission Line Height

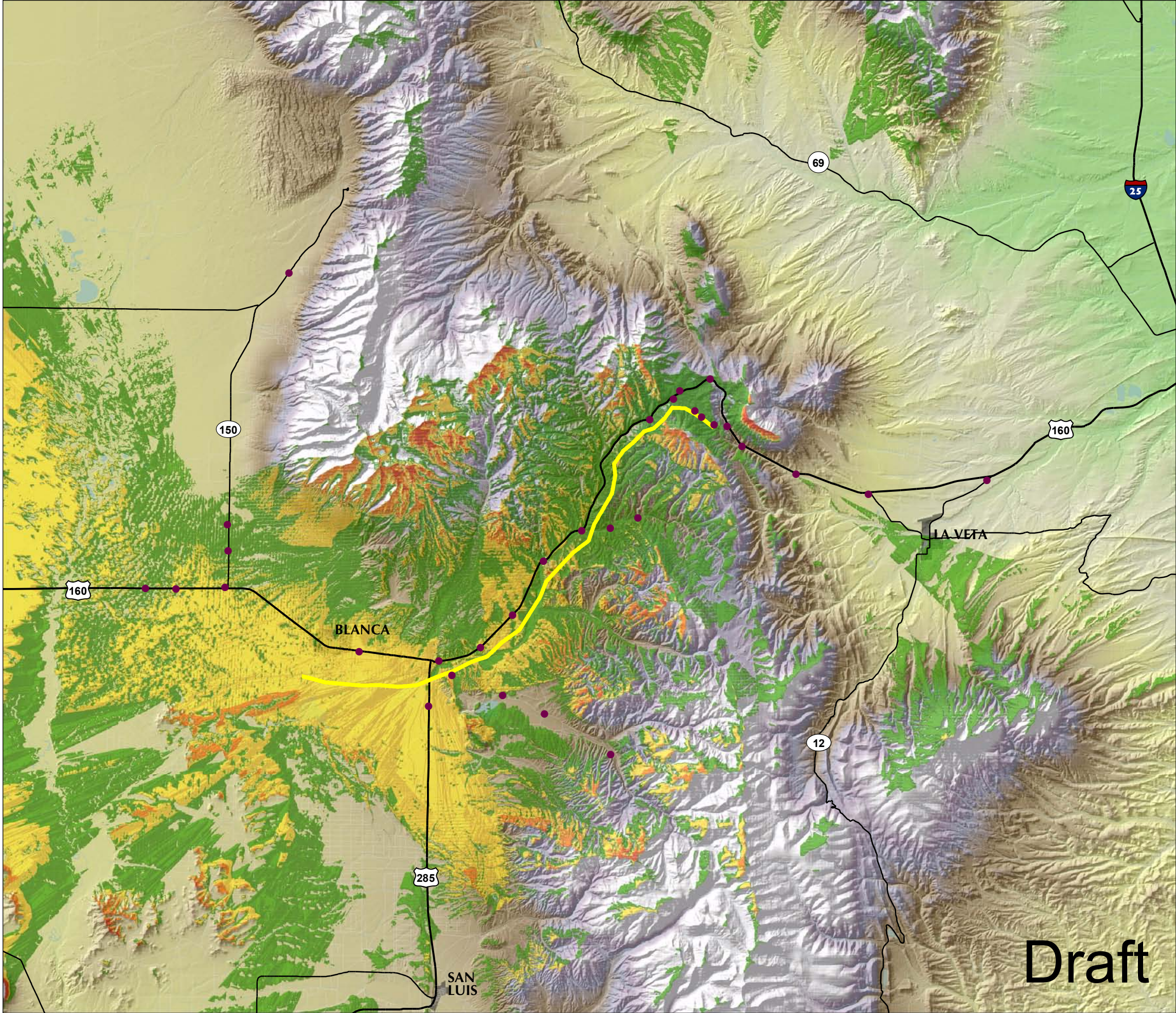
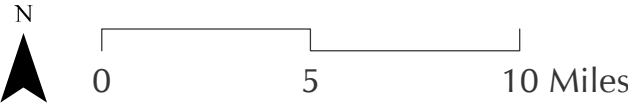
**South Corridor
Visible Hit Rate**

- 1 - 250
- 251 - 500
- 501 - 750
- 751 - 1,232

- Site Tour Stop
- South Corridor Boundary Line
- City
- Major Roads
- Minor Roads
- River/Stream
- Waterbody

**Approximate Total Viewable Area
458,365 Acres**

Note: viewable area measured within map extent





Landscape east of La Veta Pass. State Highway 160 is on the upper right.



La Veta Pass. View is looking southeast to Spanish Peaks from Old La Veta Pass Road.



West of La Veta Pass, looking southeast towards Spanish Peaks



Rolling terrain east of Alamosa and Blanca. View is looking south to Trinchera Ranch development.



Flat landscape of the Alamosa Plain, looking east along Highway 160.