

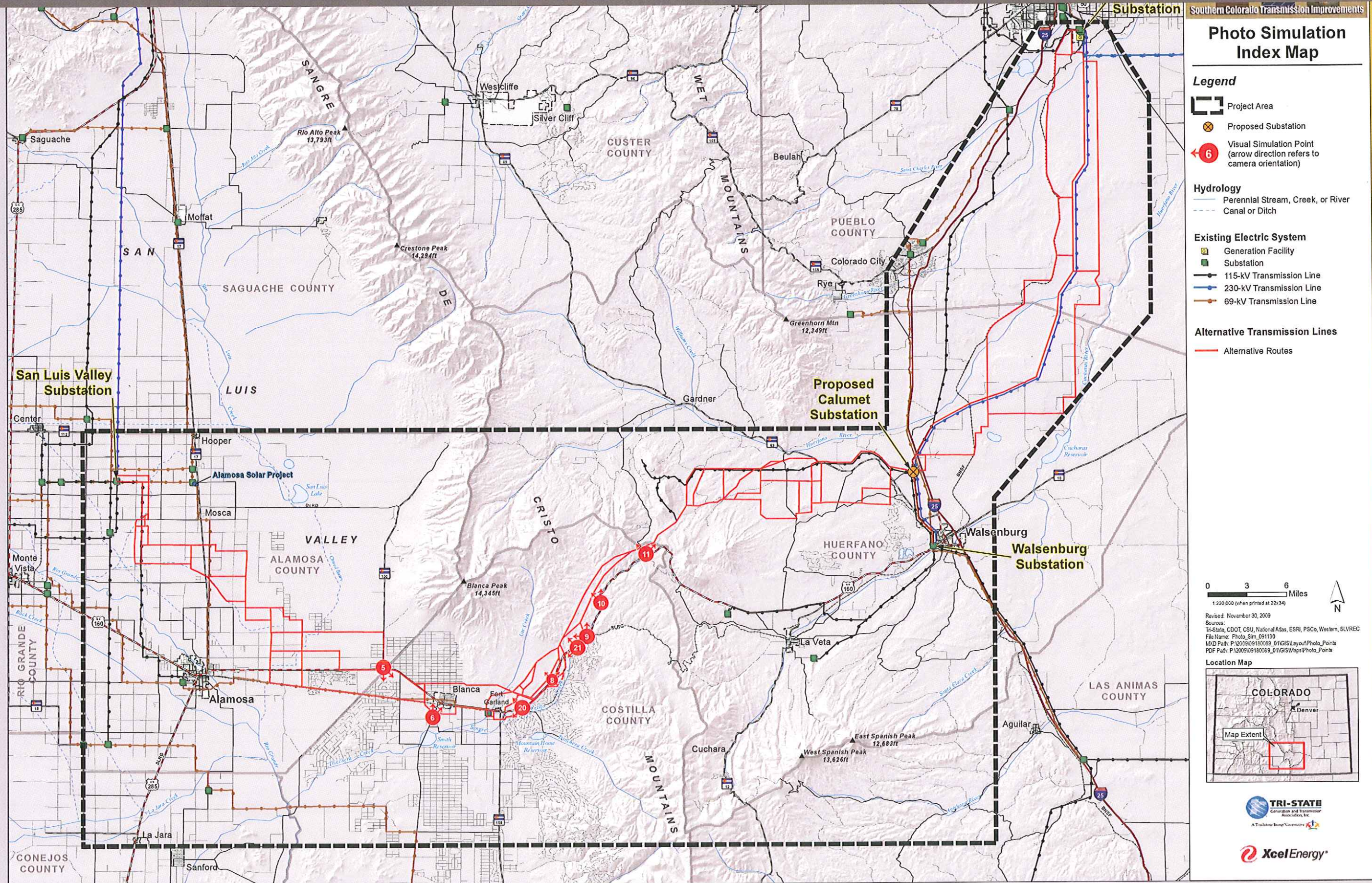
Southern Colorado Transmission Improvements

San Luis Valley – Calumet – Comanche Transmission Project

Photo Simulation Book

December 2, 2009

San Luis Valley – Calumet – Comanche Transmission Project: Photo Simulations



San Luis Valley – Calumet – Comanche Transmission Project: Photo Simulations

Simulation 5

Proposed Structures

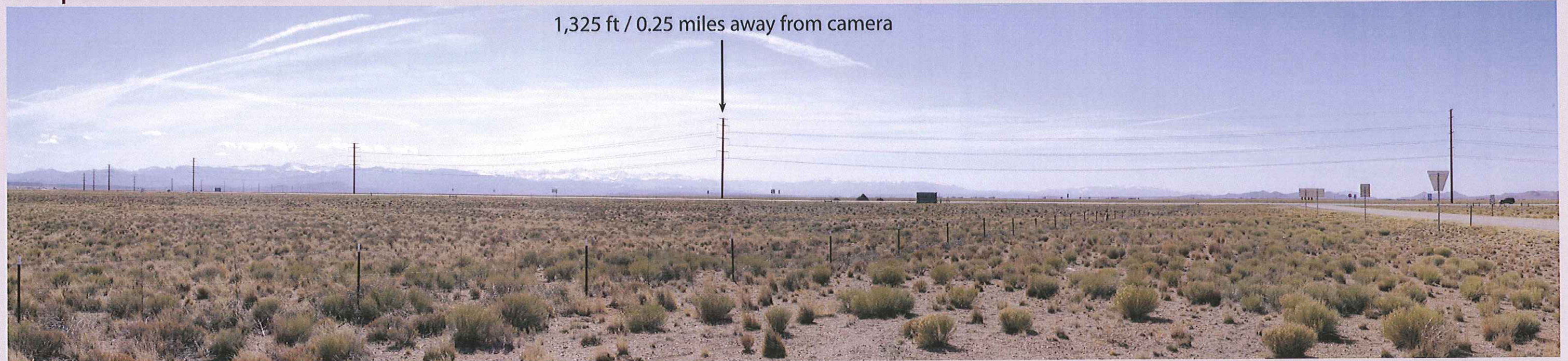


Photo taken at a historical marker site off Colorado Highway 150, approximately 0.15 miles north of U.S. Highway 160, looking southeast.



Existing Conditions

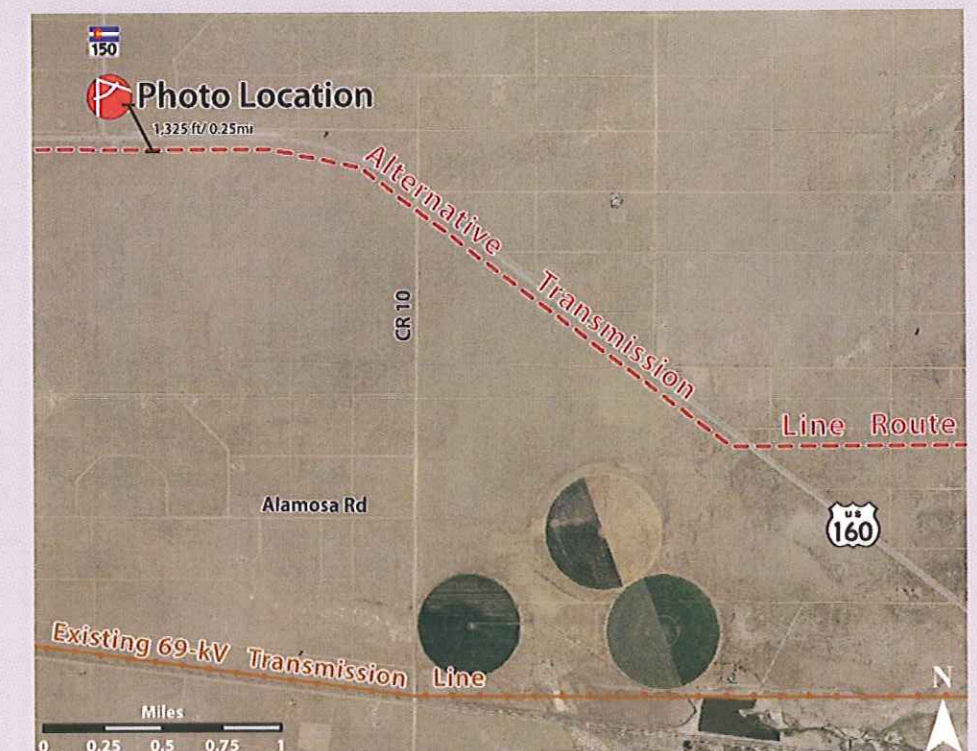


Photo Location Map

San Luis Valley – Calumet – Comanche Transmission Project: Photo Simulations

Simulation 6

Proposed Structures

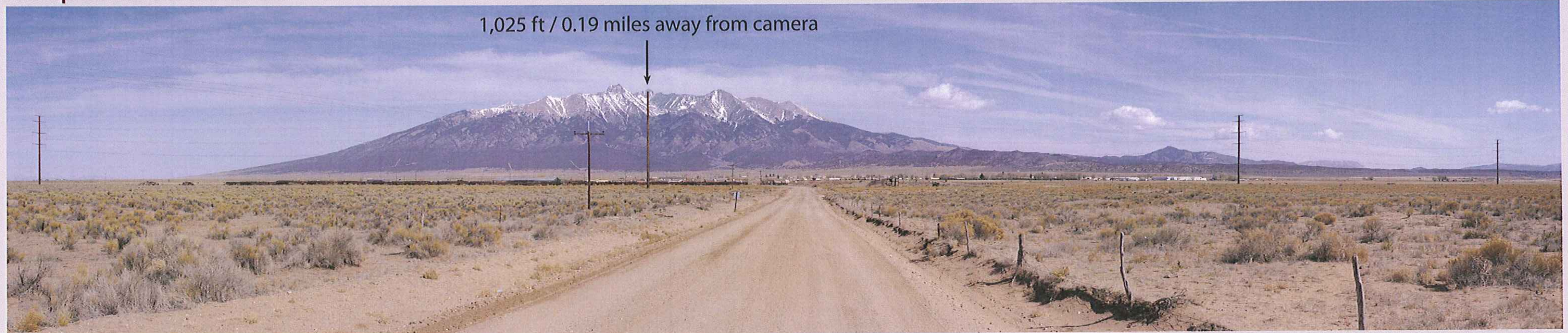


Photo taken along Costilla County Road 12, approximately 1.2 miles south of U.S. Highway 160 and the town of Blanca, looking northeast.



Existing Conditions

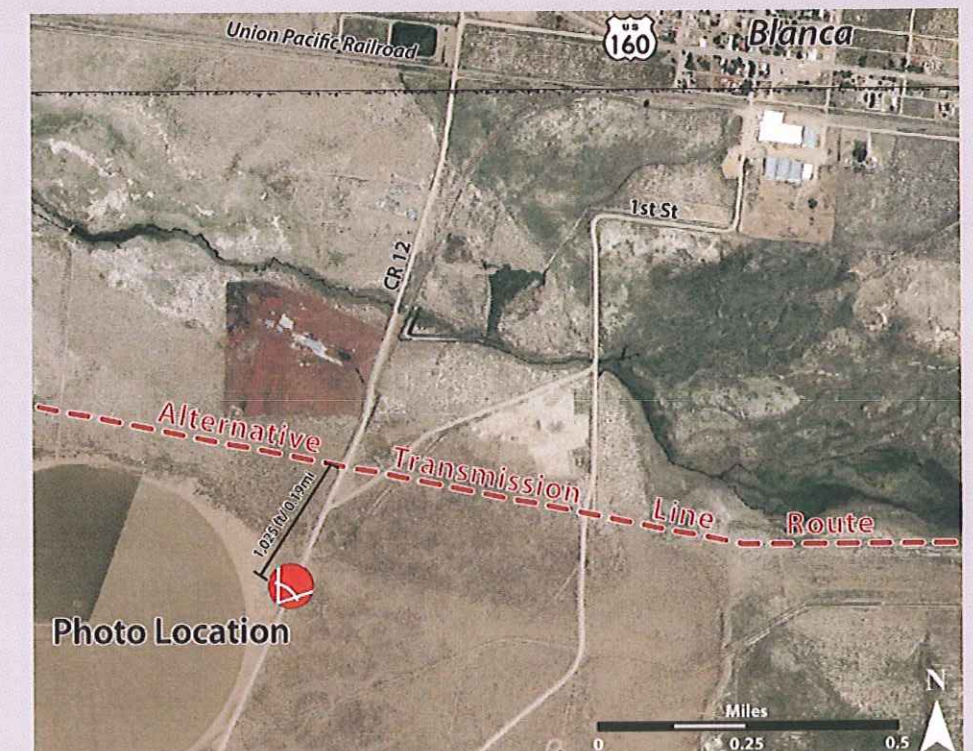


Photo Location Map